

1) Creating Data Warehouse

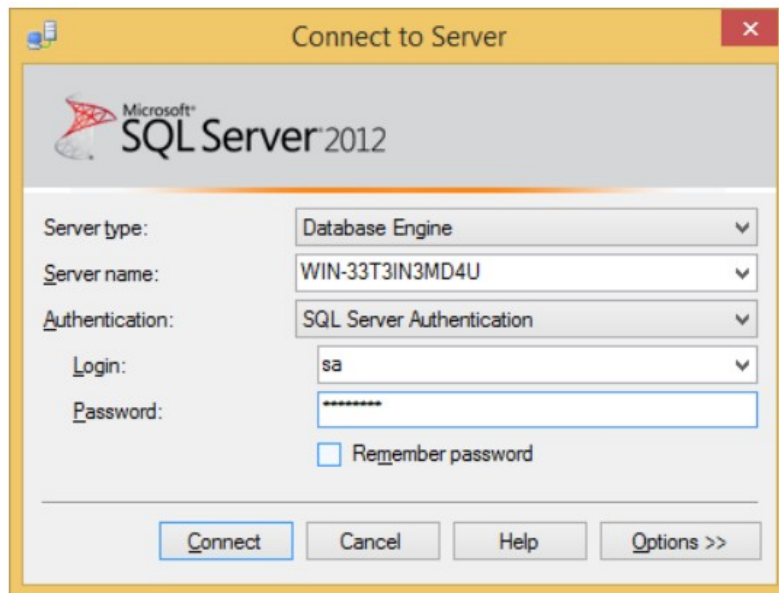
Execute T-SQL Script to create data warehouse with fact tables, dimensions and populate them with appropriate test values.

After downloading extract file in folder.

Follow the given steps to run the query in SSMS (SQL Server Management Studio).

1. Open SQL Server Management Studio 2012

2. Connect Database Engine



Password for sa : admin123 (as given during installation)

Click Connect.

3. Open New Query editor

4. Copy paste Scripts given below in various steps in new query editor window one by one

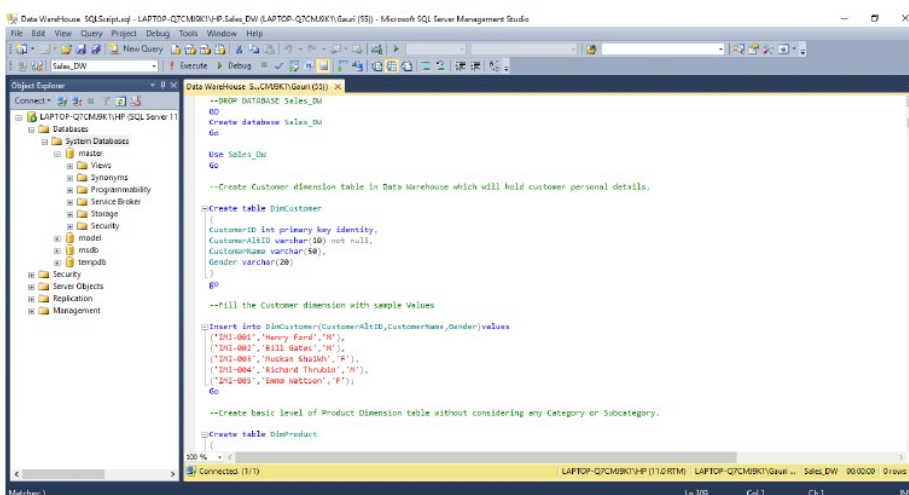
5. To run the given SQL Script, press F5

6. It will create and populate “Sales_DW” database on your SQL Server

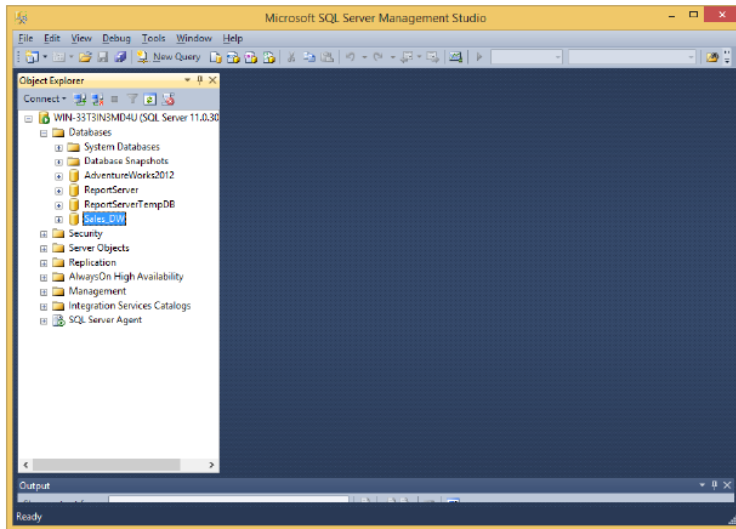
OR

1. Go to the extracted sql file and double click on it.

2. New Sql Query Editor will be opened containing Sales_DW Database.



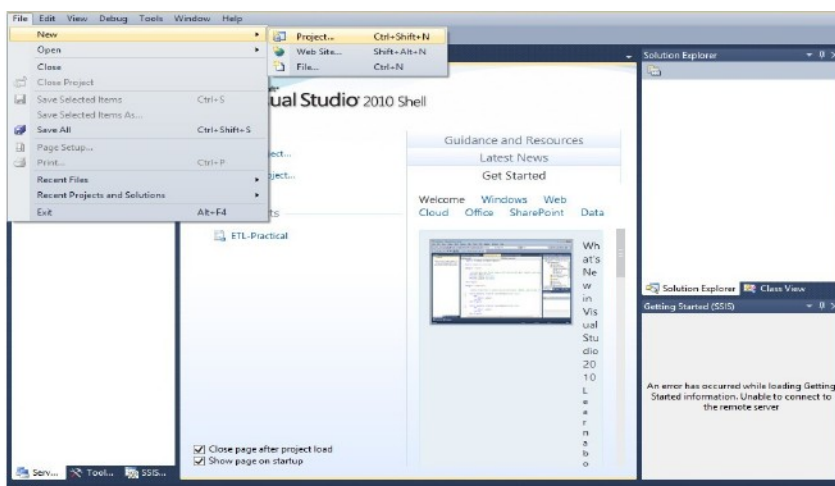
3. Click on execute or press F5 by selecting query one by one or directly click on Execute.
4. After completing execution save and close SQL Server Management studio & Reopen to see Sales_DW in Databases Tab.



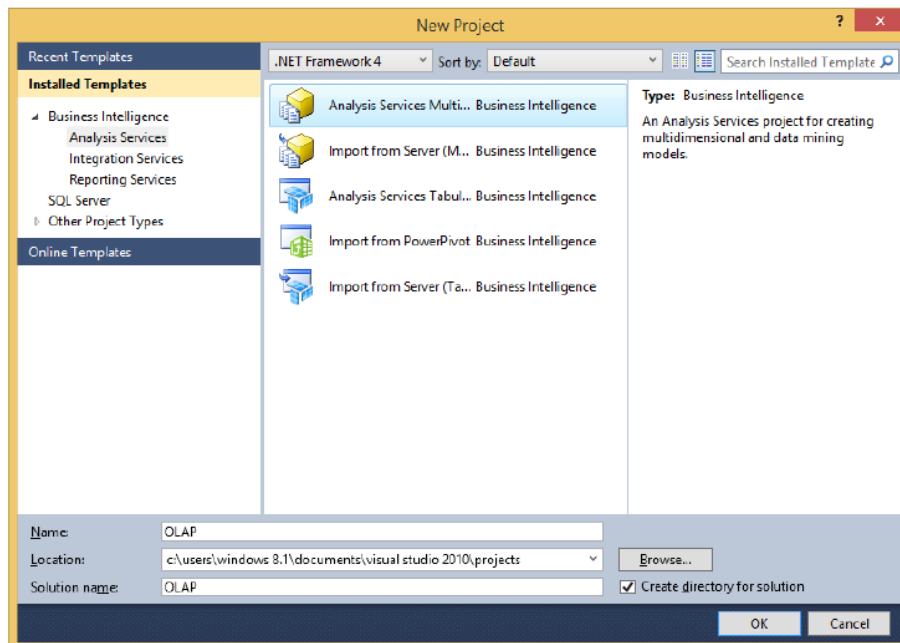
- 2) Start SSDT environment and create New Data Source
Go to Sql Server Data Tools --> Right click and run as administrator



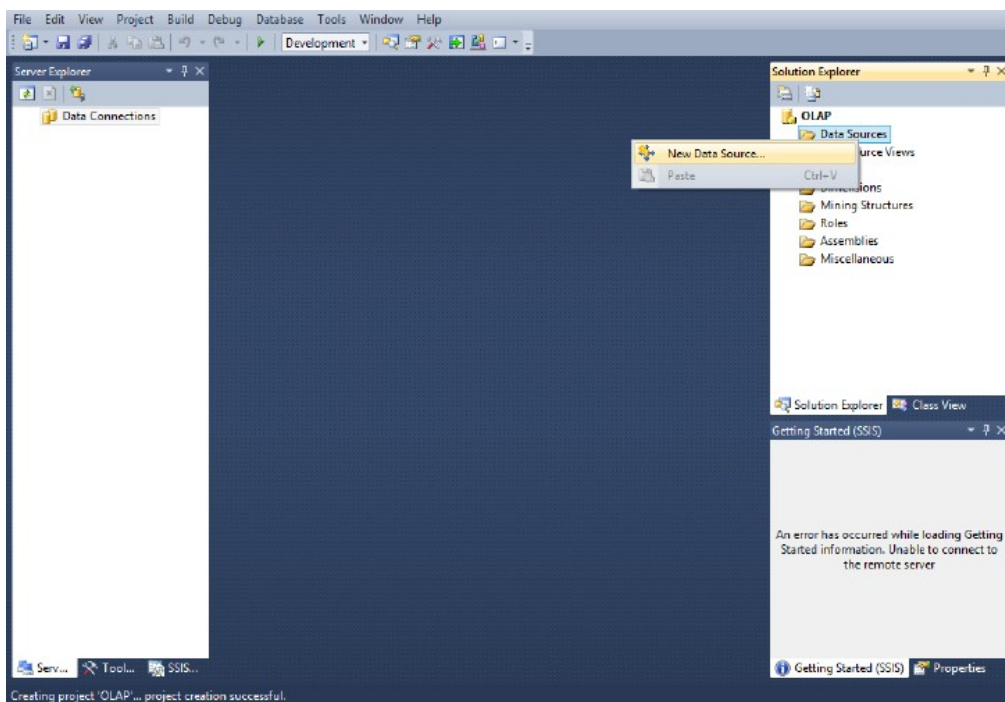
Click on File → New → Project



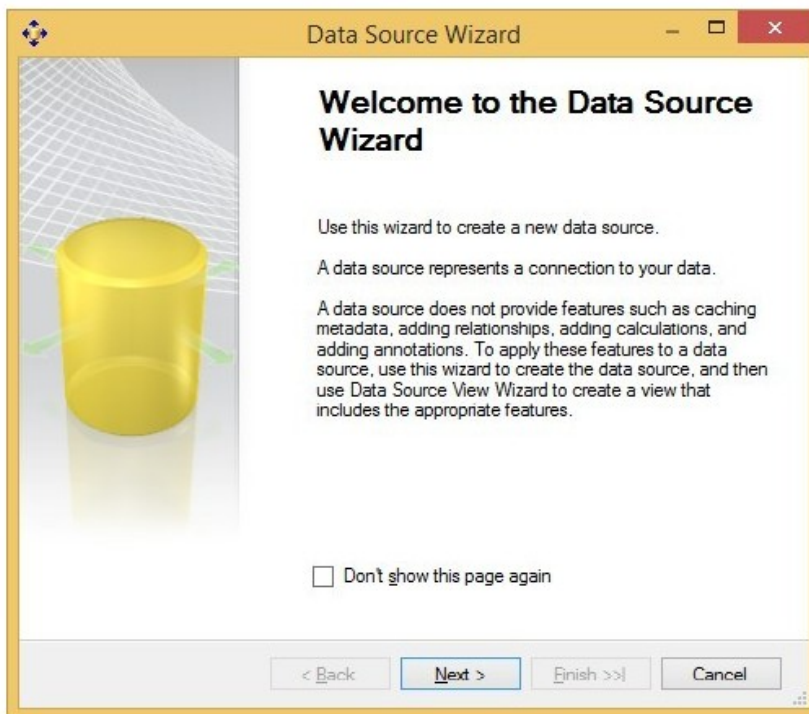
In Business Intelligence → Analysis Services Multidimensional and Data Mining models
→ appropriate project name → click OK



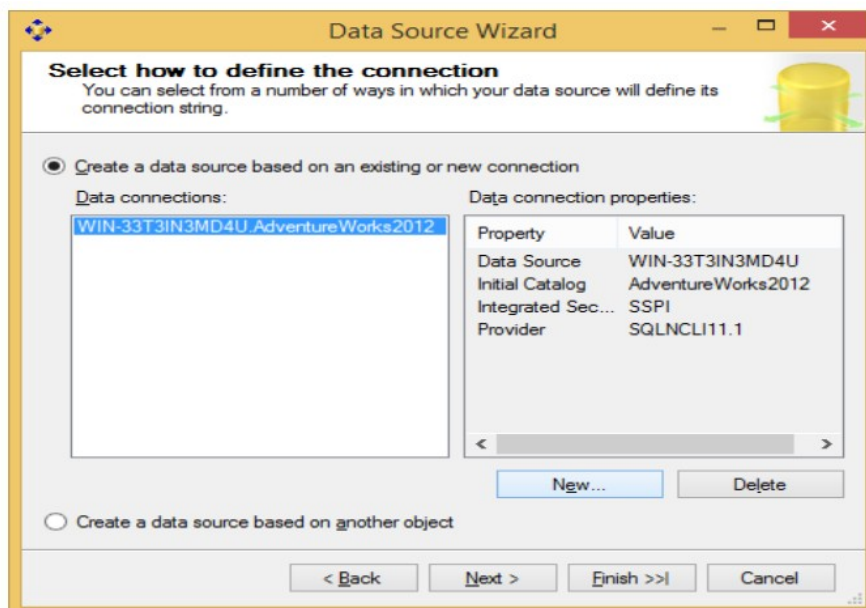
Right click on Data Sources in solution explorer → New Data Source



Data Source Wizard appears

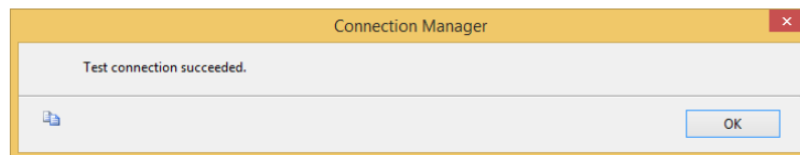
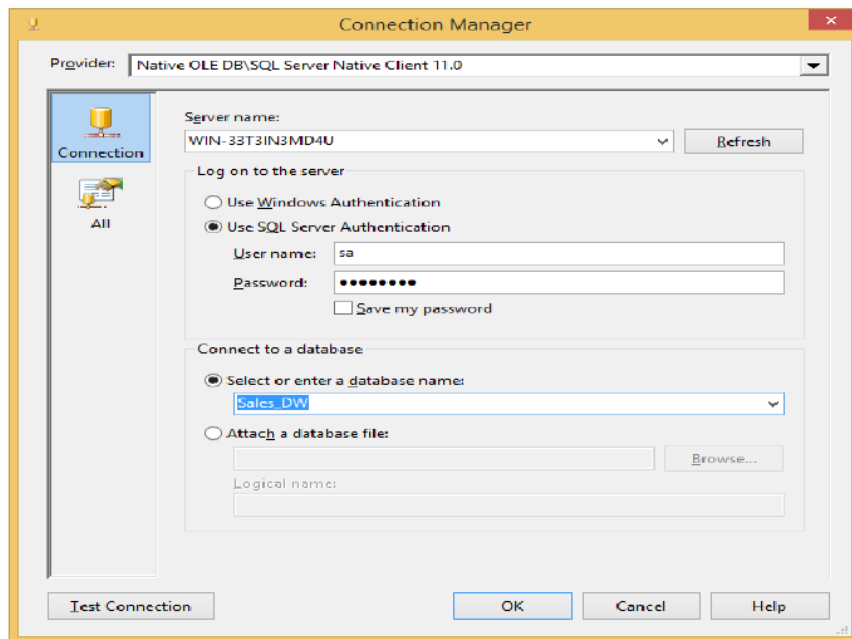


Click on New

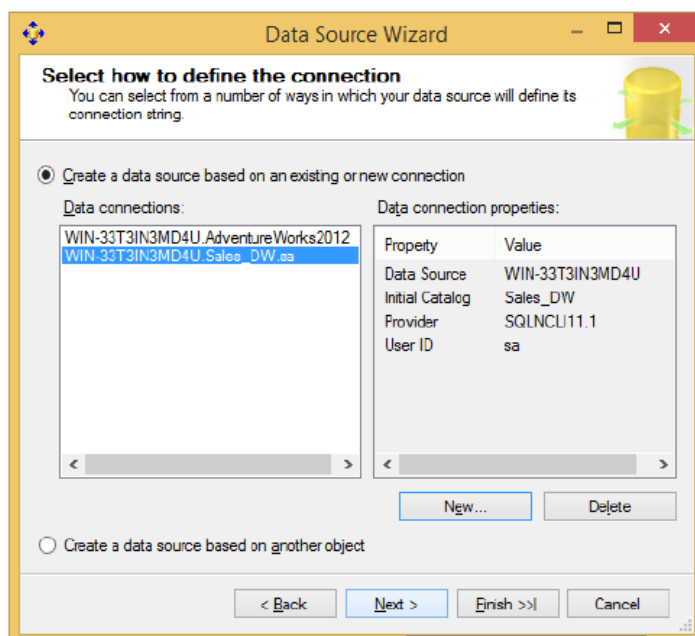


Select Server Name → select Use SQL Server Authentication → Select or enter a database name (Sales_DW)

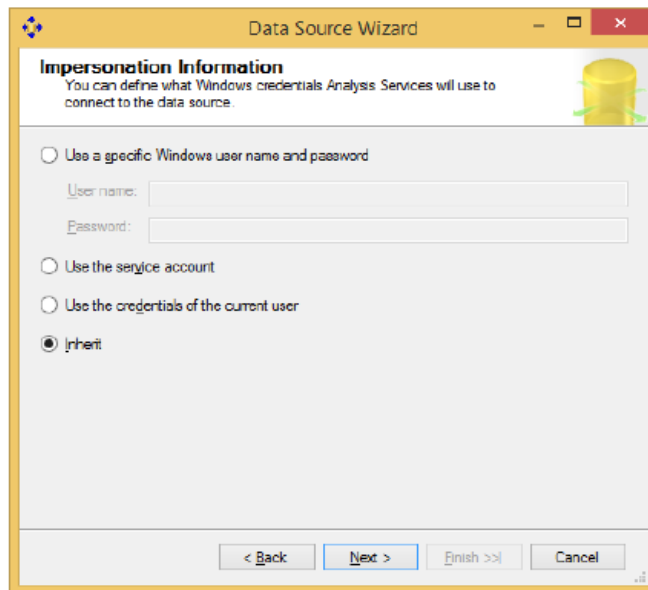
Note : Password for sa : admin123 (as given during installation of SQL 2012 full version)



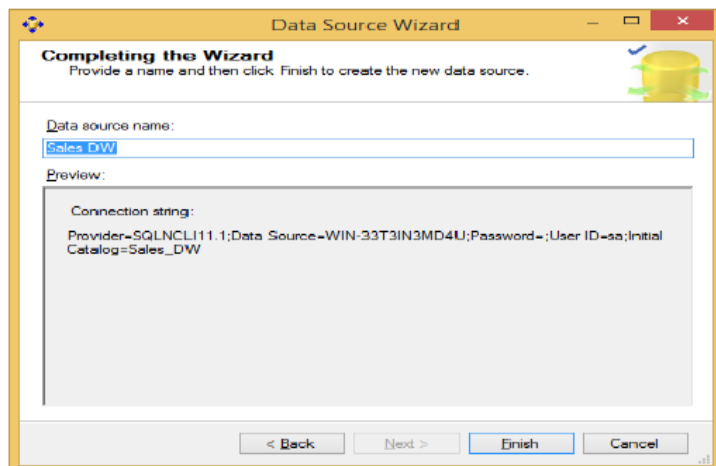
Click Next



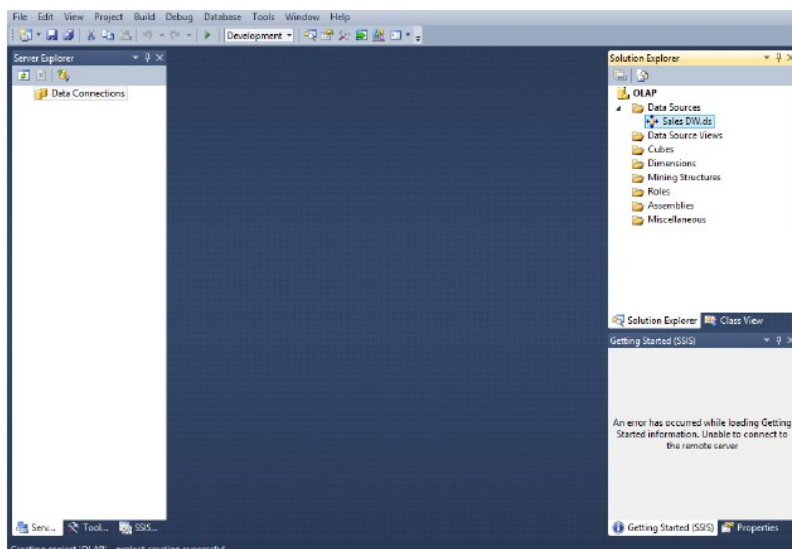
Select Inherit → Next



Click Finish

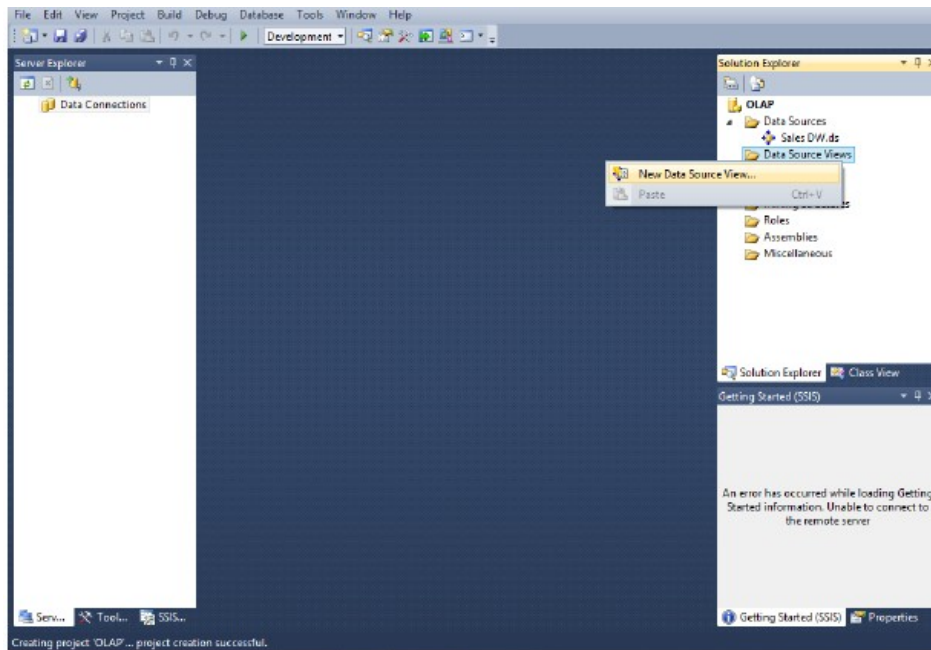


Sales_DW.ds gets created under Data Sources in Solution Explorer

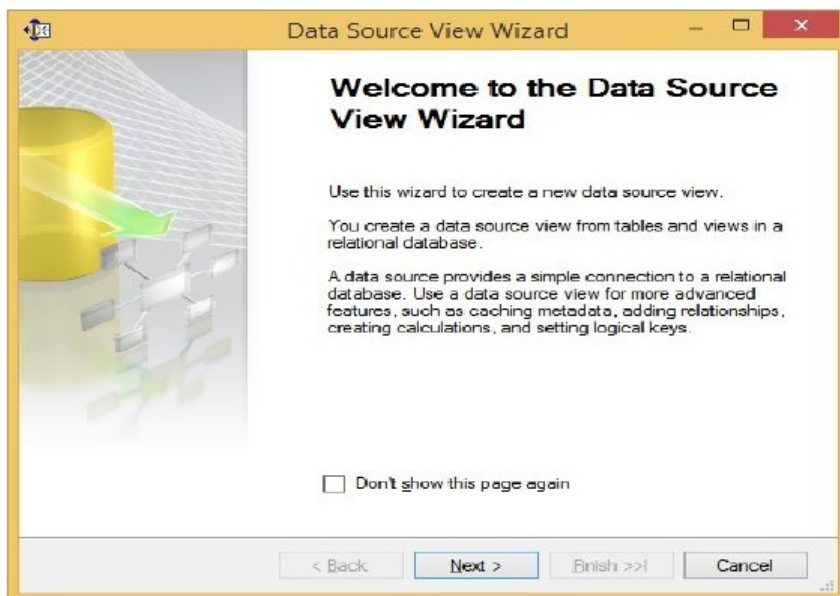


3) Creating New Data Source View

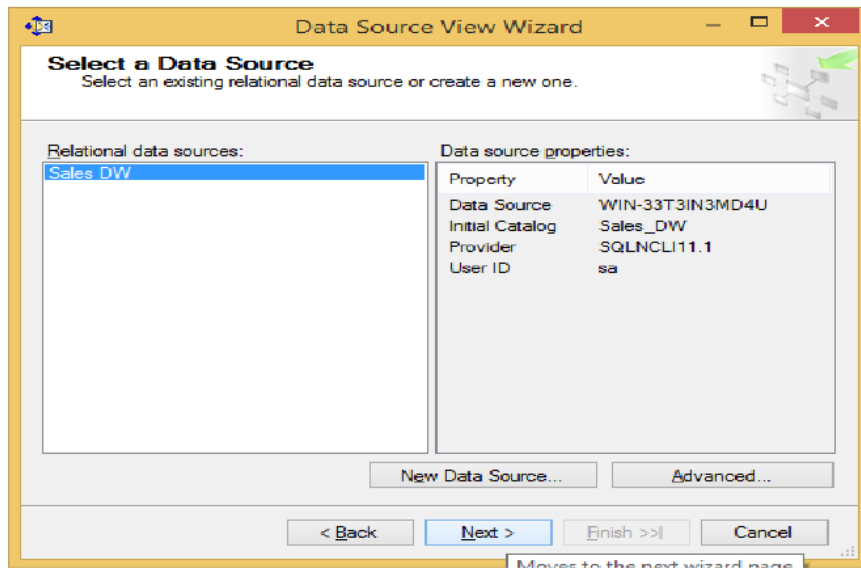
In Solution explorer right click on Data Source View → Select New Data Source View



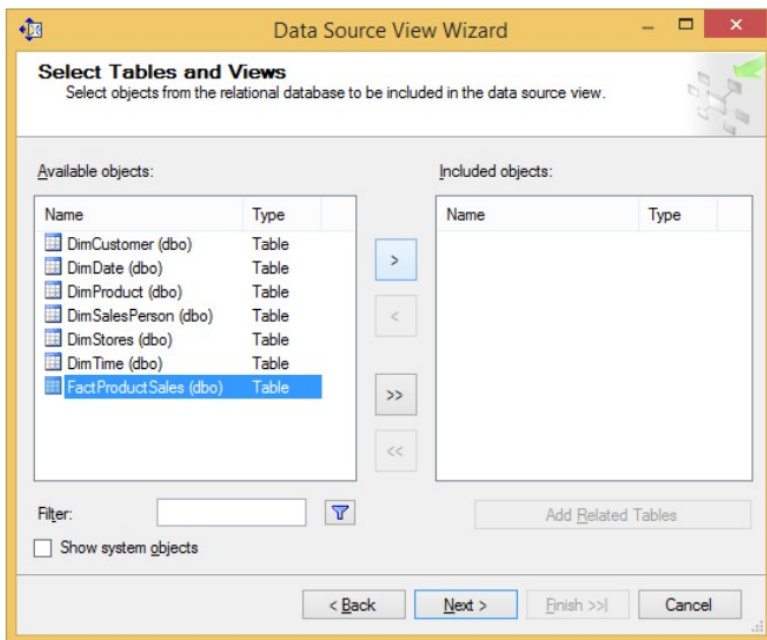
Click Next

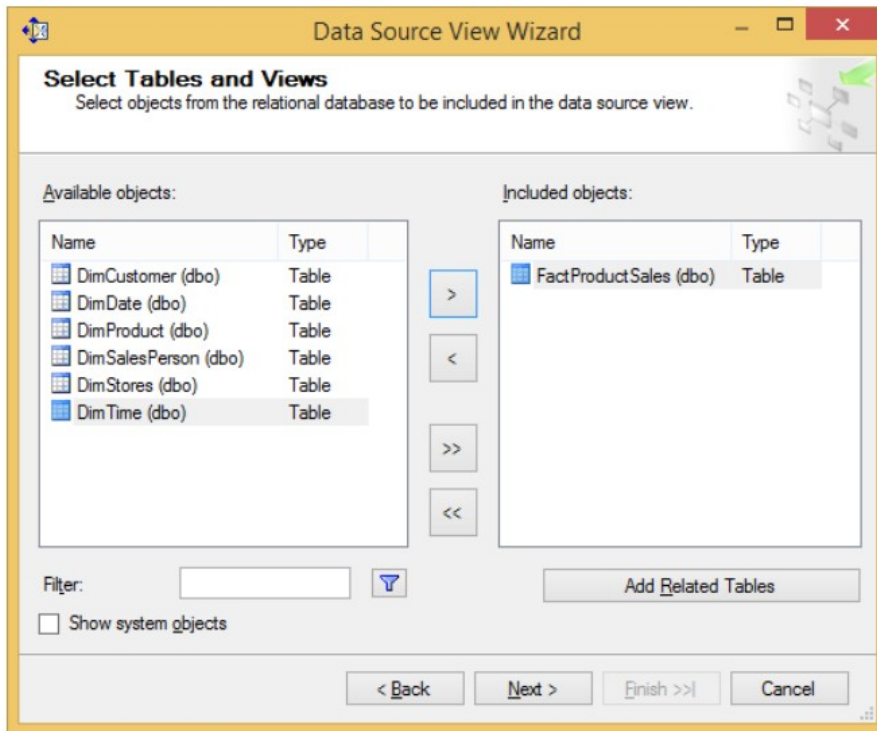


Click Next

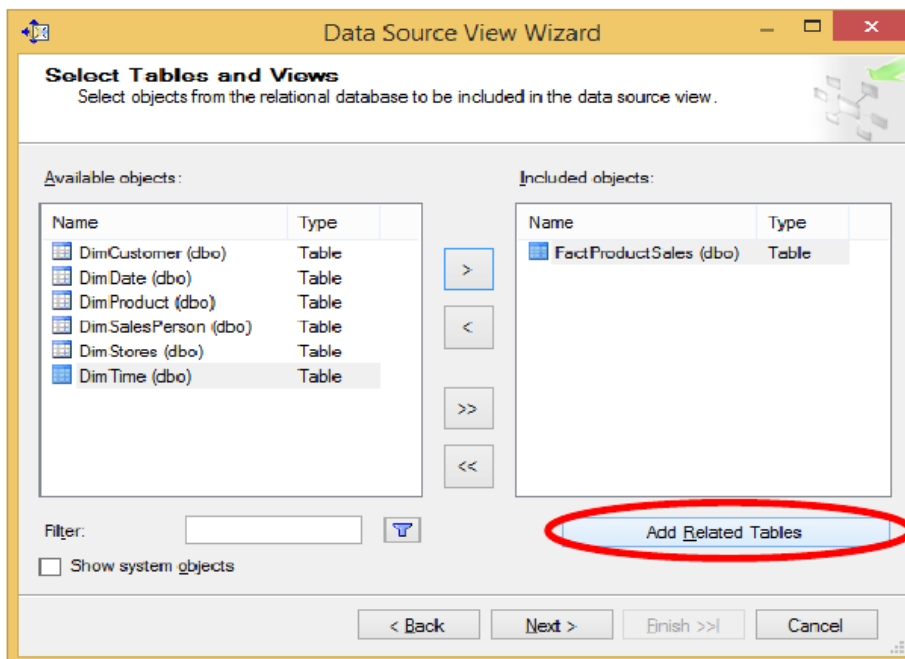


Select FactProductSales(dbo) from Available objects and put in Includes Objects by clicking on >

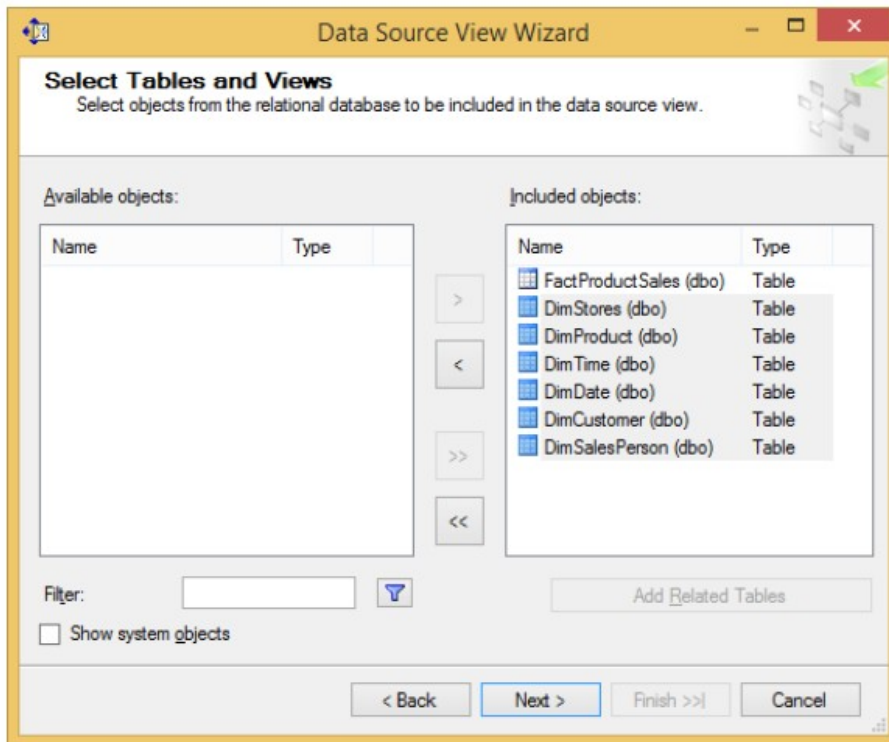




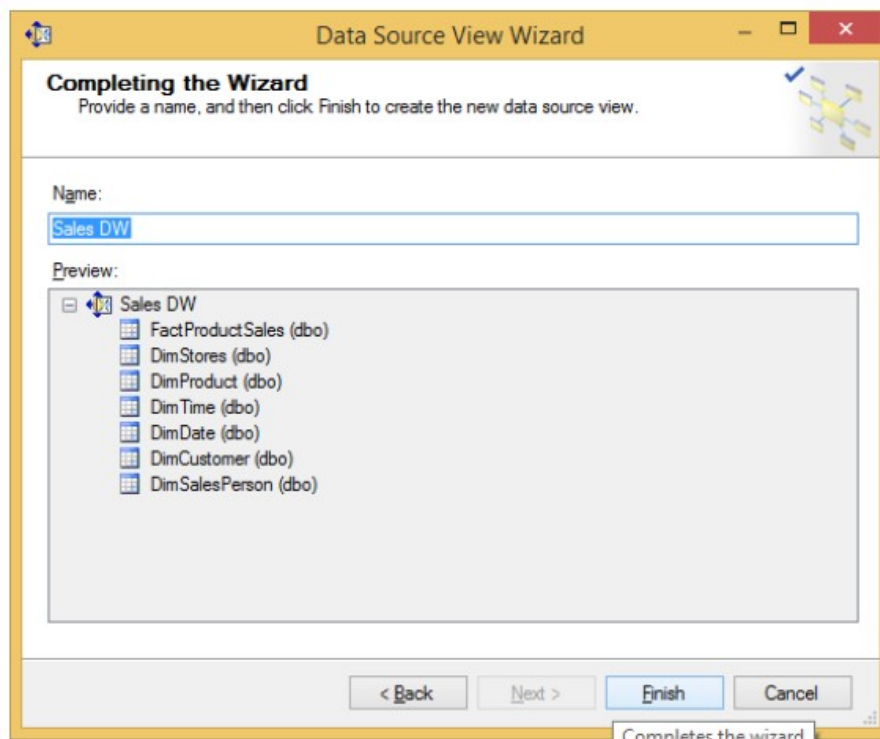
Click on Add Related Tables



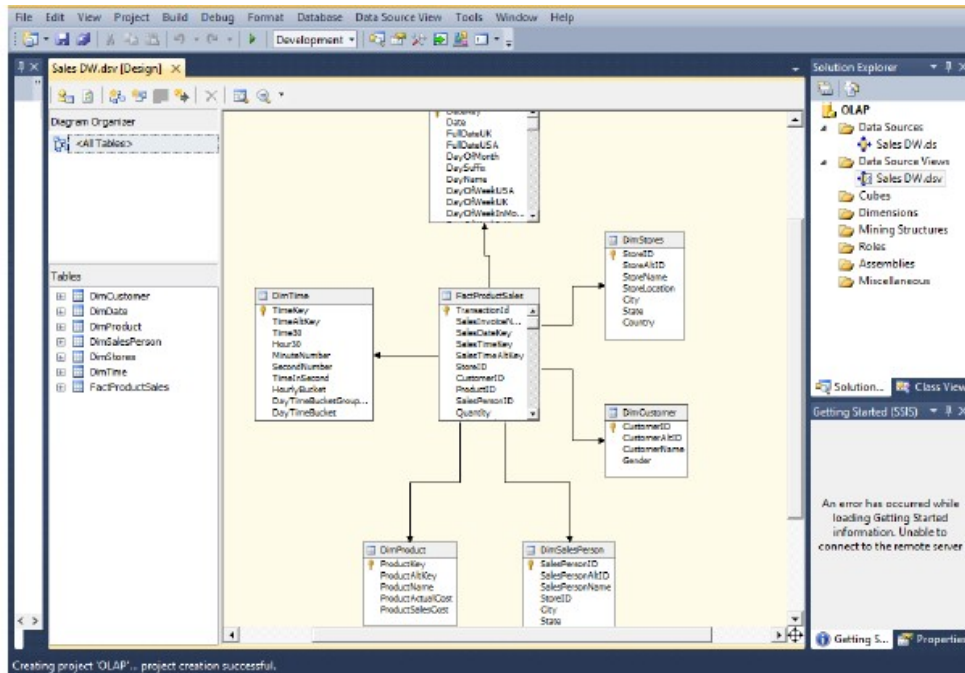
Click Next



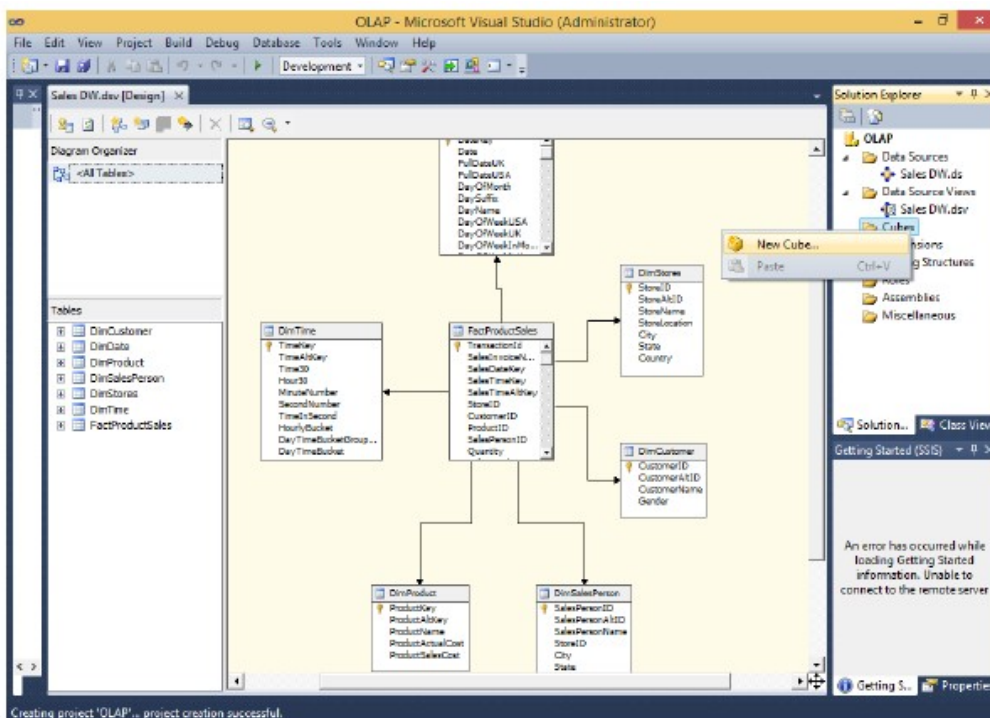
Click Finish

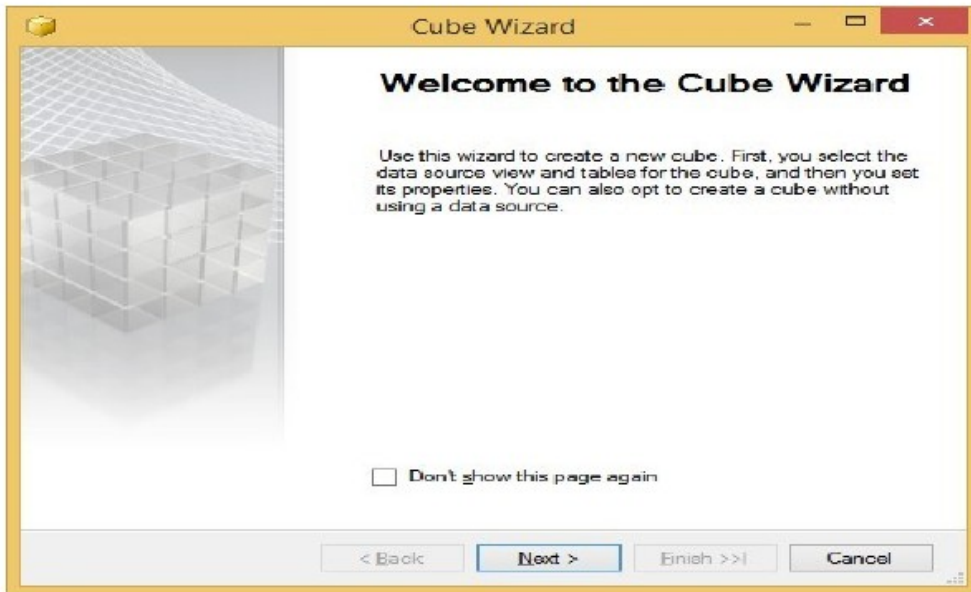


Sales DW.dsv appears in Data Source Views in Solution Explorer.

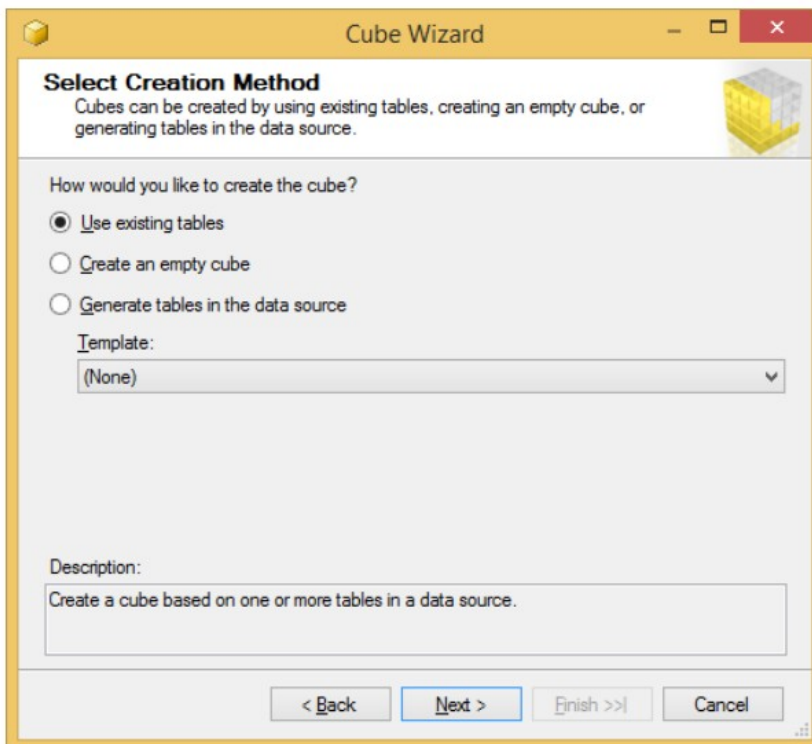


4) Creating new cube
Right click on Cubes → New Cube

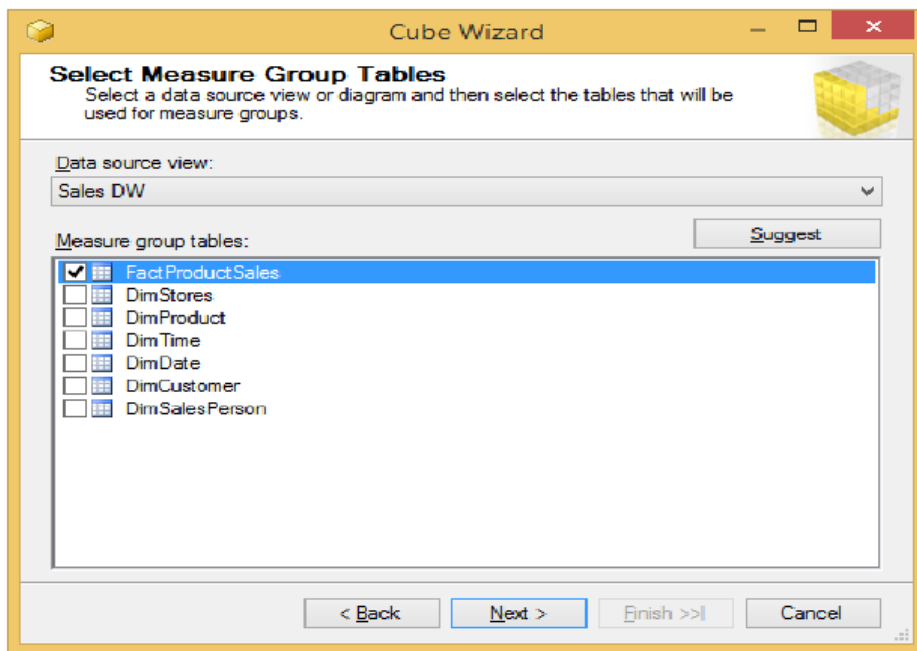




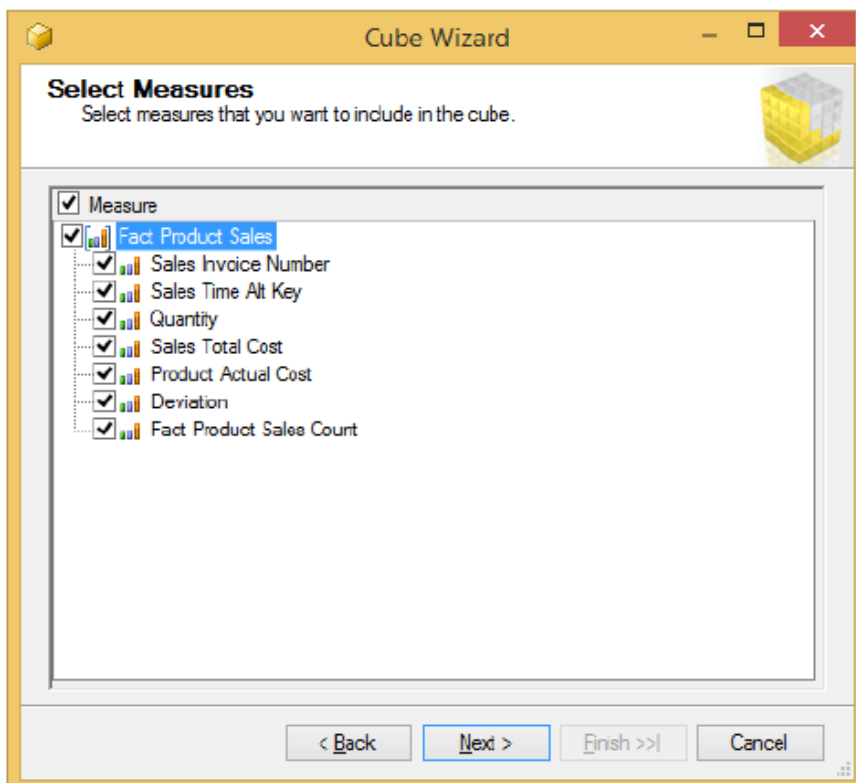
Select Use existing tables in Select Creation Method → Next



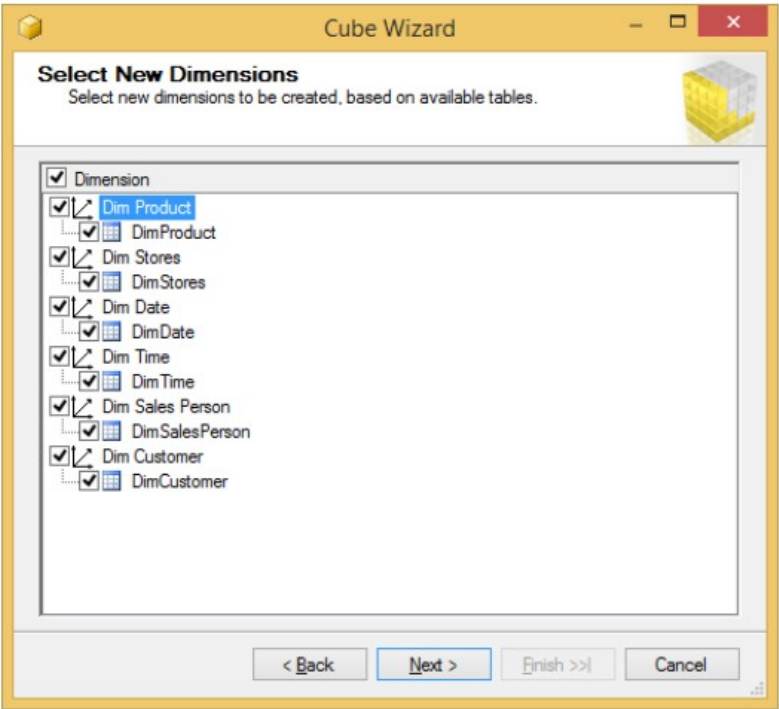
In Select Measure Group Tables → Select FactProductSales → Click Next



In Select Measures → check all measures → Next



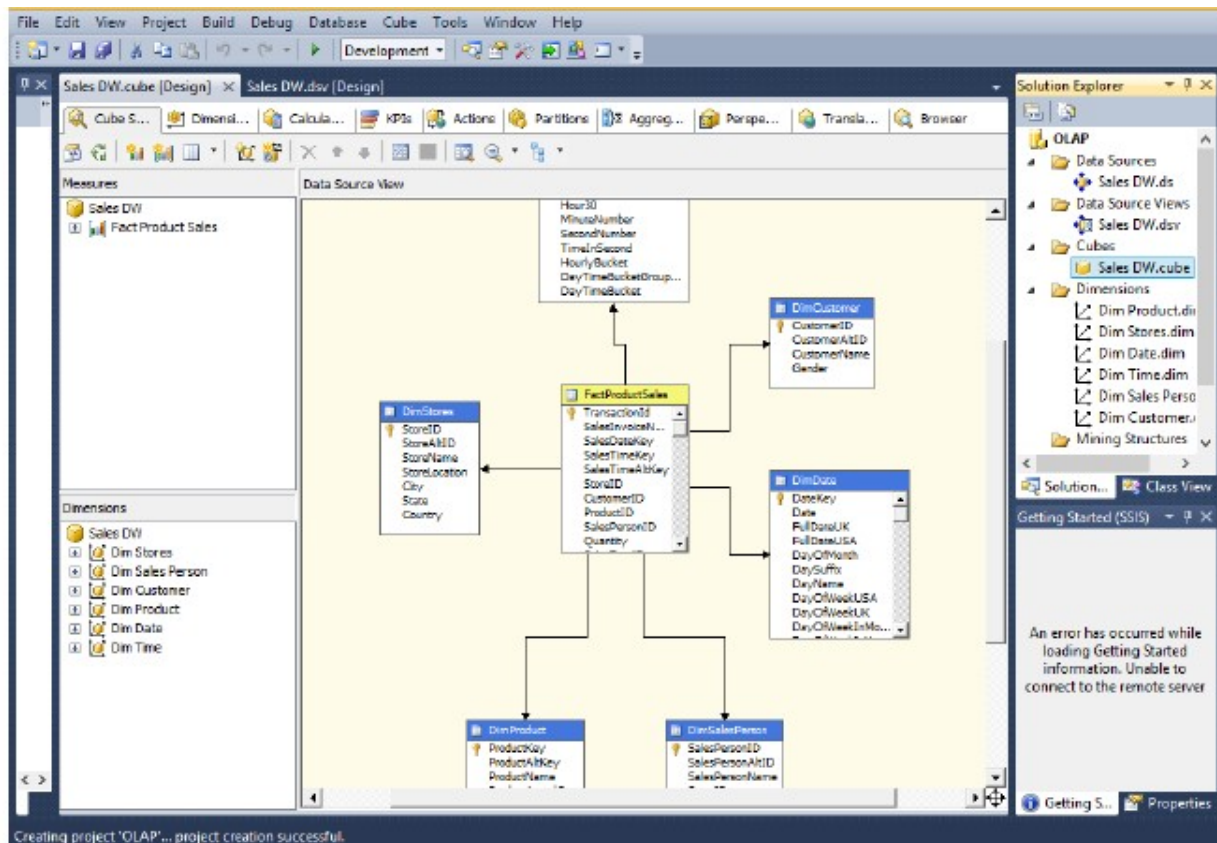
In Select New Dimensions → Check all Dimensions → Next



Click on Finish

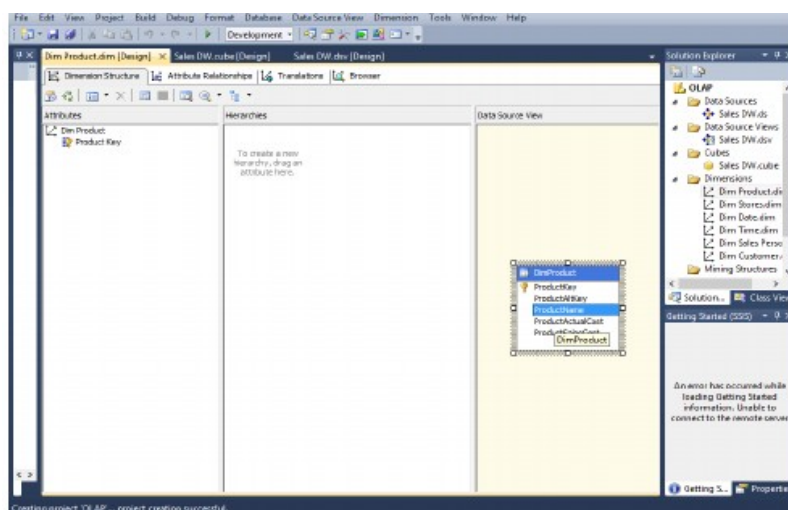


Sales_DW.cube is created Successfully

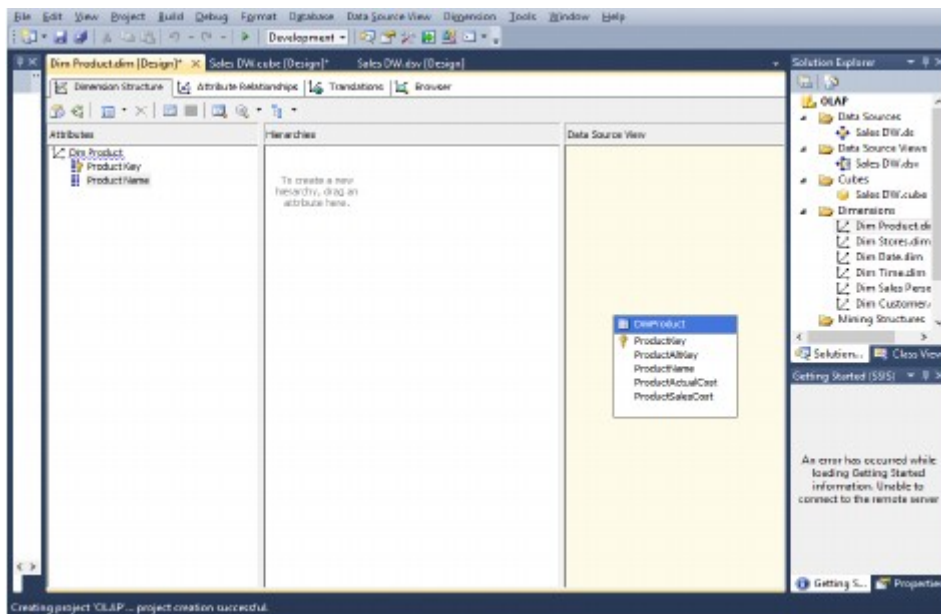


5) Dimension Modification

In dimension tab → Double Click Dim Product.dim



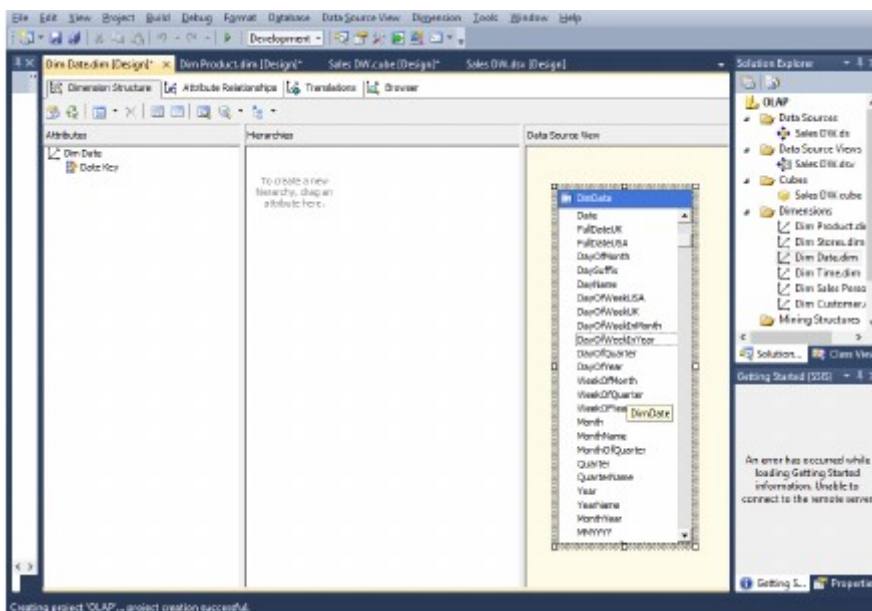
Drag and Drop Product Name from Table in Data Source View and Add in Attribute Pane at left side

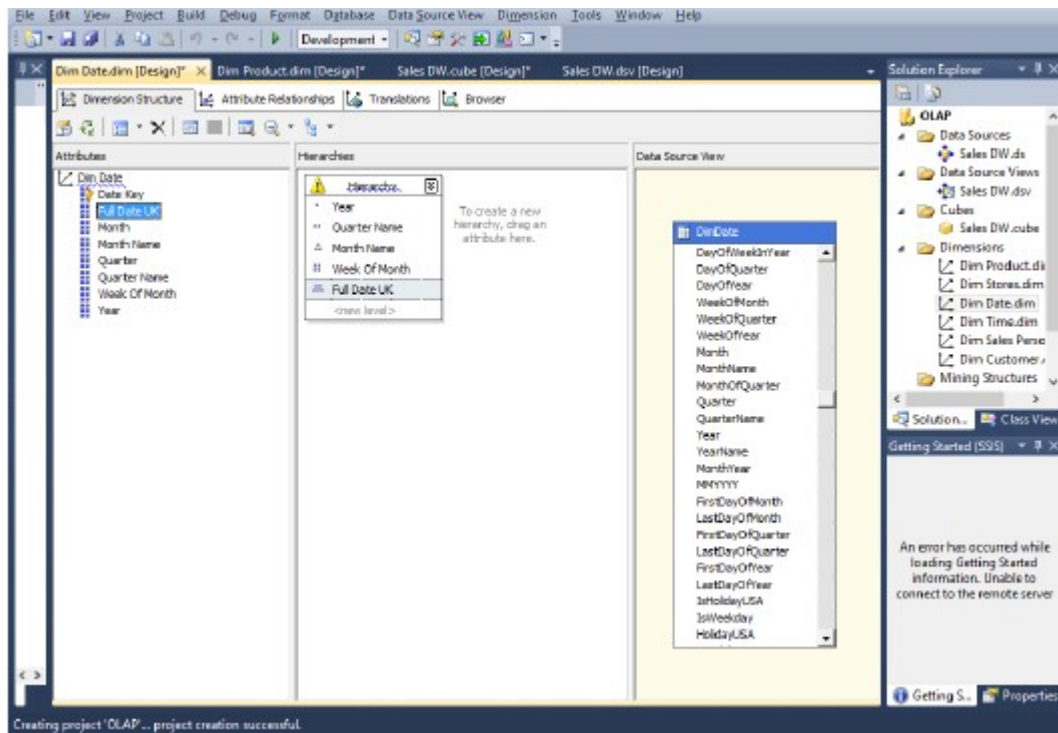


6) Creating Attribute Hierarchy in Date Dimension

Double click On Dim Date dimension -> Drag and Drop Fields from Table shown in Data Source View to Attributes -> Drag and Drop attributes from leftmost pane of attributes to middle pane of Hierarchy.

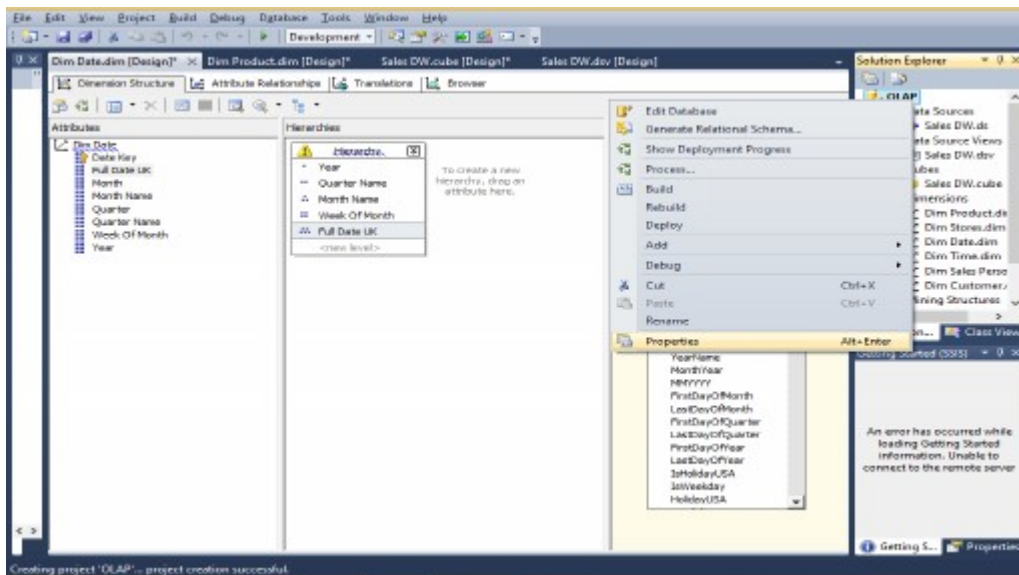
Drag fields in sequence from Attributes to Hierarchy window (Year, Quarter Name, Month Name, Week of the Month, Full Date UK)



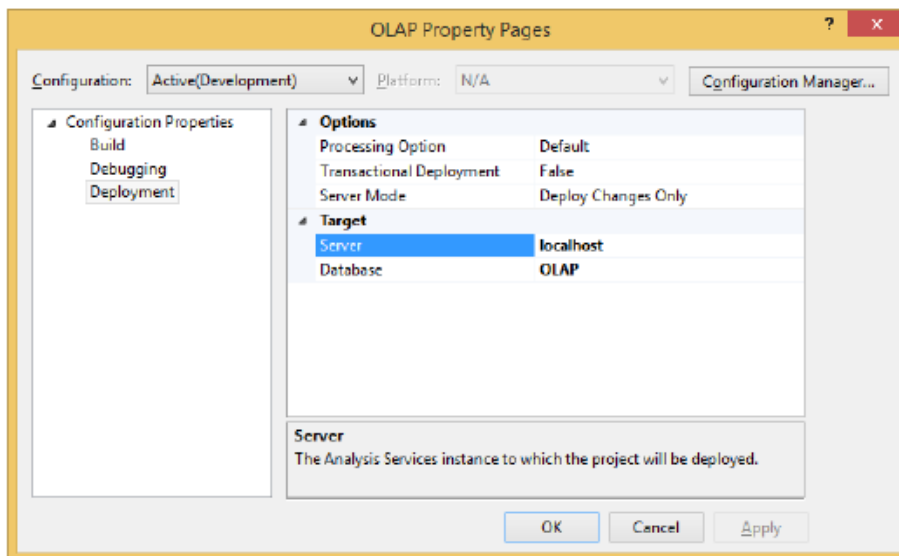


7) Deploy Cube

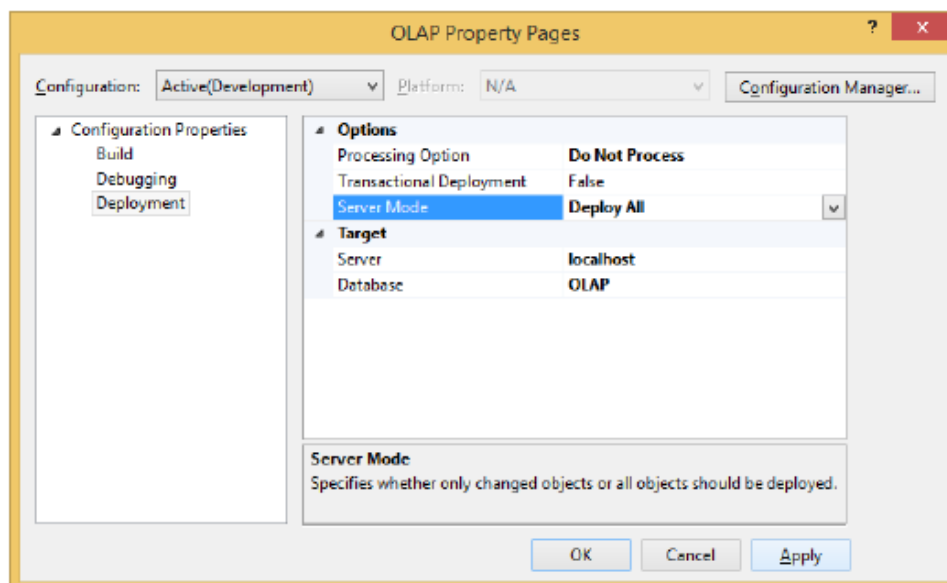
Right click on Project name → Properties



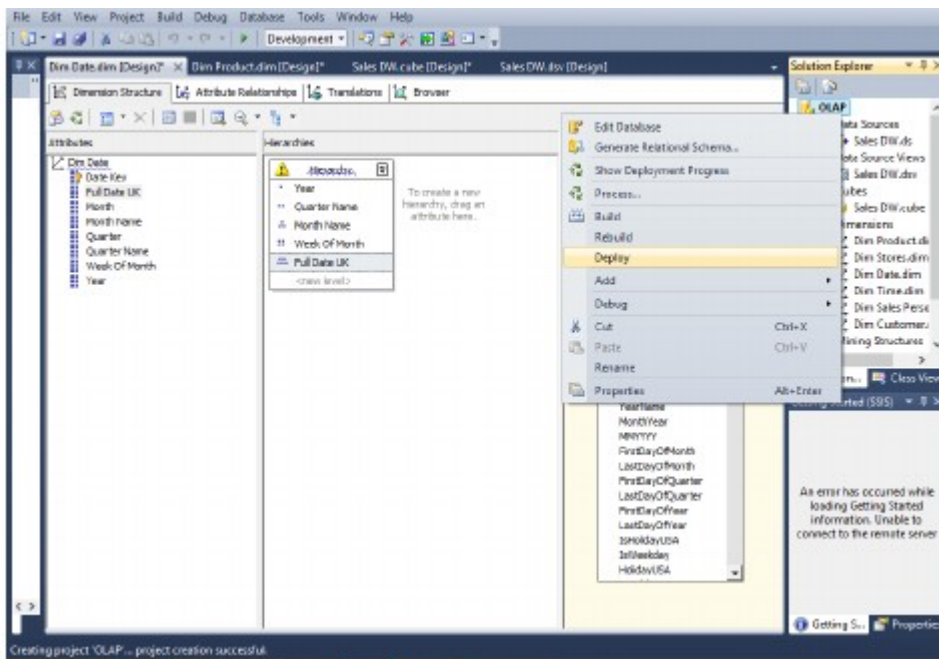
This window appears



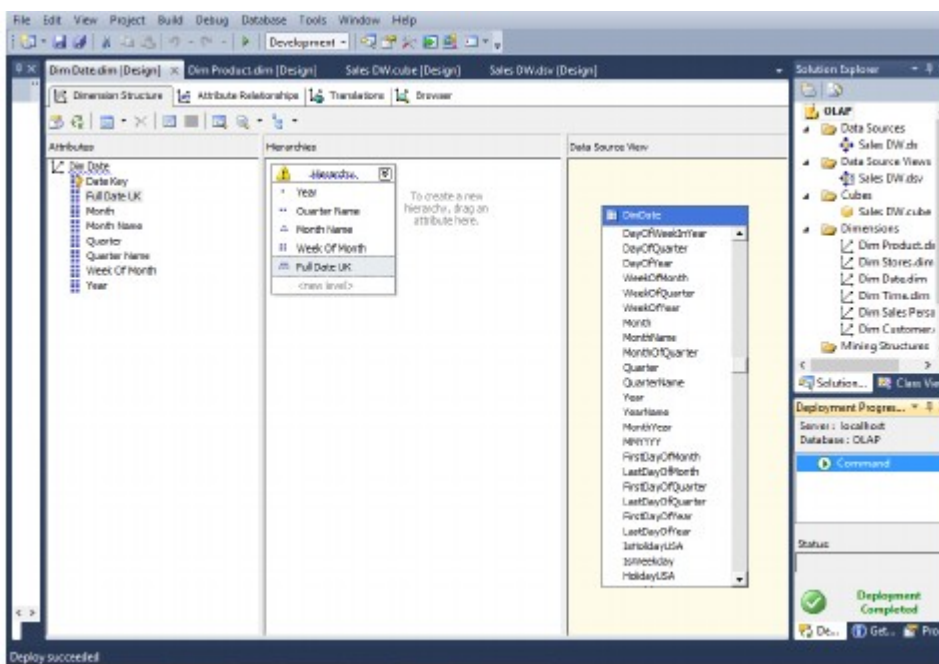
Do following changes and click on Apply & ok



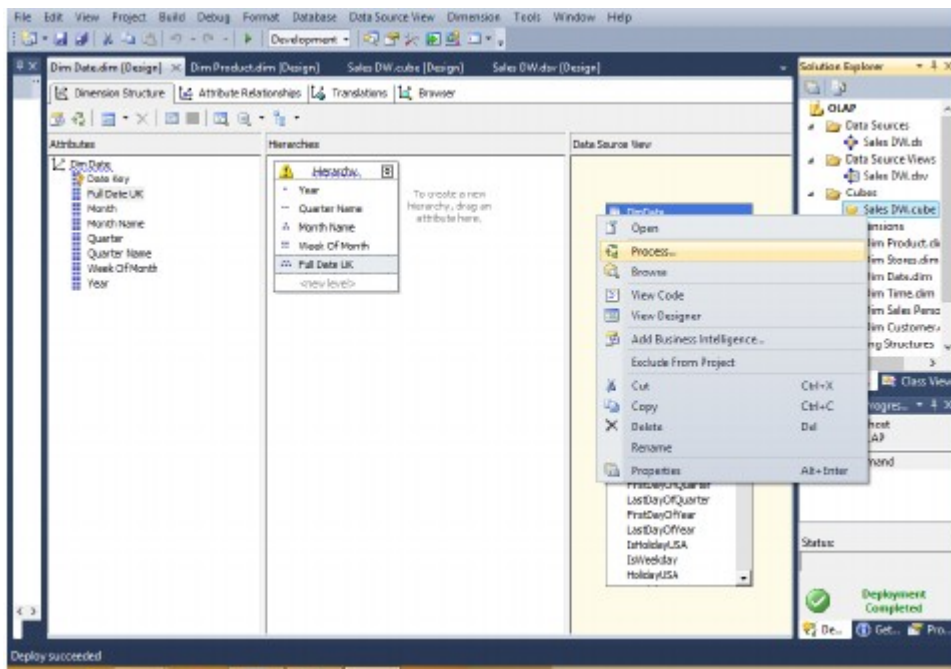
Right click on project name → Deploy



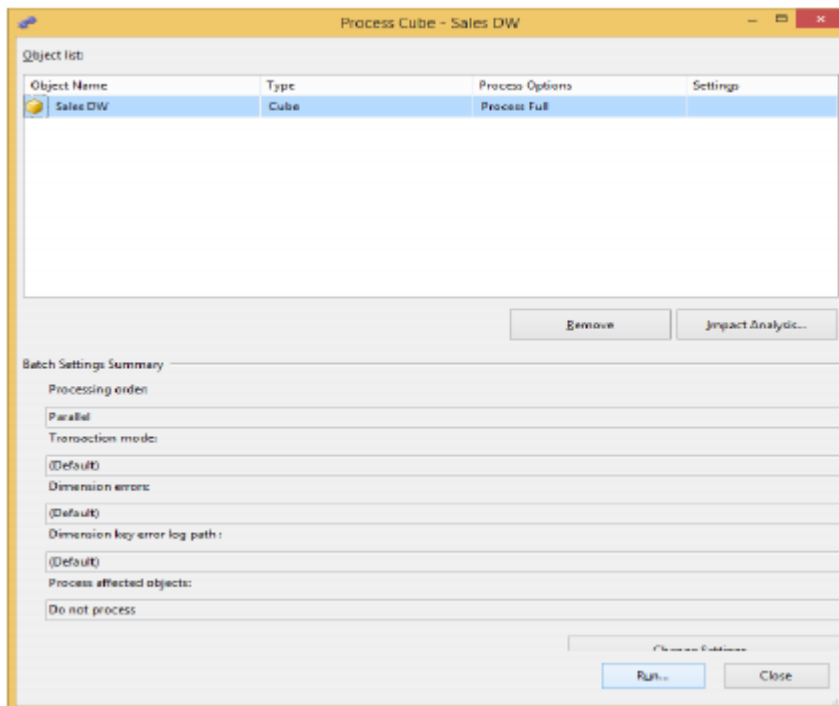
Deployment successful

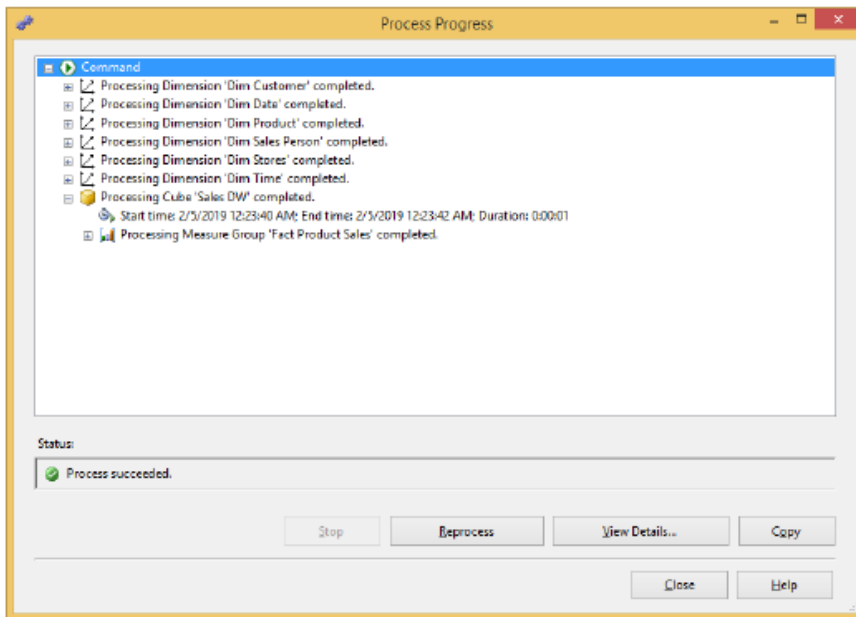


To process cube right click on Sales_DW.cube → Process



Click run





Browse the cube for analysis in solution explorer

